

## Comfortable

- No goeey mess associated with impression materials
- Breathe and swallow naturally during the digital 3D scan
- No unpleasant taste

## Safe

- Does not expose you to radiation
- Uses a laser to generate the images

## Accurate

- Precise fit of Invisalign® aligners and retainers
- Eliminates the need to retake impressions multiple times

## Fast

- View 3D scans onscreen with your orthodontist immediately
- Results in faster delivery times of your personalized Invisalign® treatment plan



# Making A Great First Impression— Without The Goop Or Gag!



## Let's face it—

it's not easy to stop your gag reflex when getting a goop-filled dental impression made!



Thankfully, old-school impressions are no longer the only option. With **state-of-the-art technology** and the progressive orthodontist office that's providing your treatment, making a great—and comfortable—first impression with the iTero® scanner has never been easier.

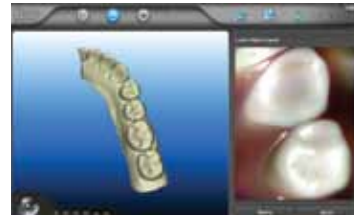
The iTero scanner allows your orthodontist to take a digital impression—a **highly accurate, digital 3D image** of the individual characteristics of your teeth and gum tissue. The iTero scanner is all about keeping you comfortable while delivering precise imagery, without the goop or gagging associated with conventional impressions.

In addition to being **more comfortable**, the digital scan can also be used for Invisalign® services that are used to deliver the beautiful smile of your dreams!



### The Wand

Your orthodontist uses the iTero to capture images of your tooth surfaces and gum tissue



### The Scan

You and your orthodontist can follow the scanning progress on the computer screen



### The 3D Model

The completed scan is sent to the computer, which builds a 3D model of your tooth surfaces and gum tissue



iTero®